

Coaxial Attenuators

Low, medium and high power

Product description	4
Low power attenuators, up to 2 Watts	
BNC, 50 and 75 Ω	5
N 50 and 75 Ω	6
PC2.4	7
PC7	7
QMA	7
SK	8
SMA	8
SMPX-U	10
TNC	10
Medium power attenuators, up to 50 Watts	
N	11
SMA	12
7/16	12
High power attenuators, up to 300 Watts	
N	13
SMA	13
7/16	14

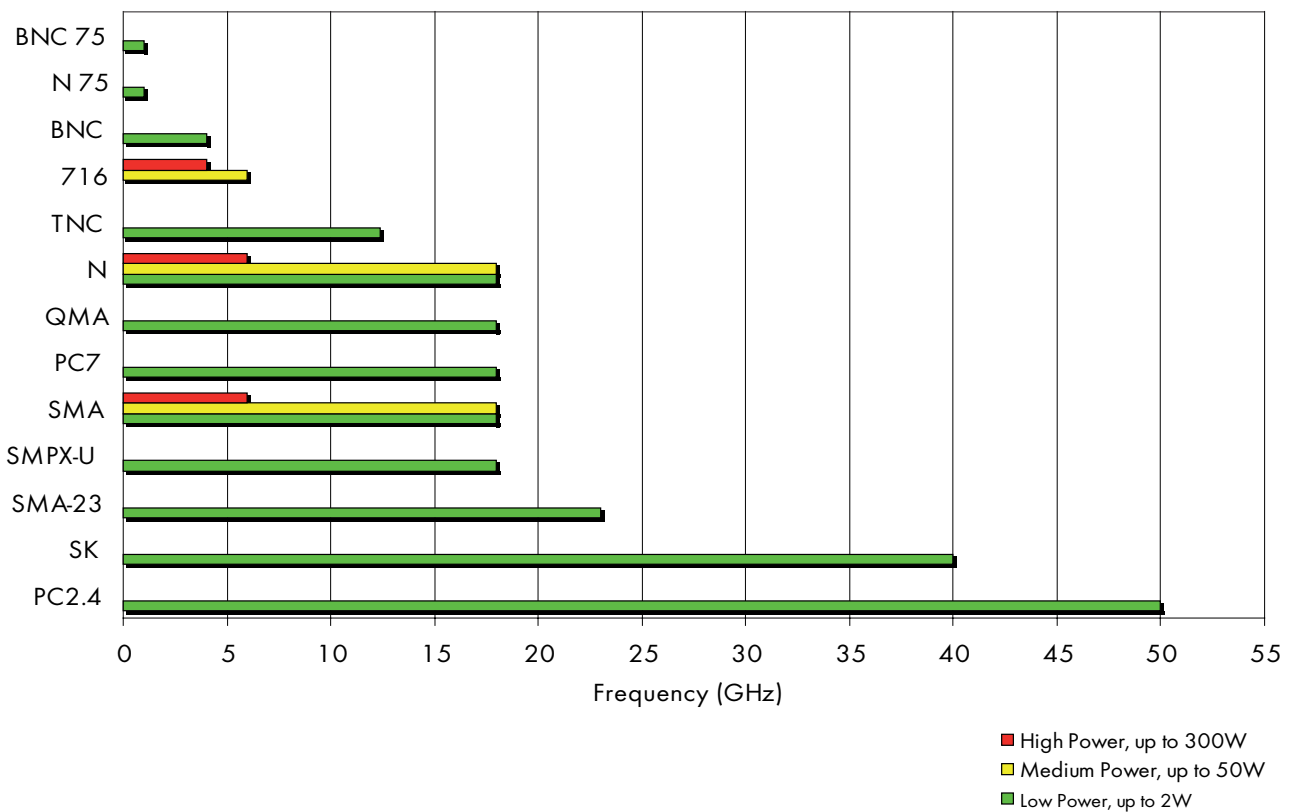
Product description

RF Attenuators are used to reduce the input power. They are used in many test+measurement and communication applications (e.g. as fine power adjuster between different channels or as a protection for the input of the network analyzer).

Features and benefits

- Broadband
- Wide selection of interfaces and attenuation values
- According IEC/MIL/CECC interface standard
- High repeatability

Attenuators quick selection chart



Note: Detailed outline drawings or further details are available either by your local HUBER+SUHNER representative or on our website hubersuhner.com.

Low power attenuators, up to 2 Watts

BNC male/female, 50 Ω

Nom. attenuation (dB)	Frequency (GHz)	VSWR max.	Power rating (W)	HUBER+SUHNER type	Item no.
10	4	1.2	1	6810.01.A	22550179
20	4	1.2	1	6820.01.A	22550180
30	4	1.2	1	6830.01.A	22550181
1	4	1.2	2	6801.01.A	22641542
2	4	1.2	2	6802.01.A	22641543
3	4	1.2	2	6803.01.A	22550177
4	4	1.2	2	6804.01.A	22641544
6	4	1.2	2	6806.01.A	22550178
7	4	1.2	2	6807.01.A	22641546



BNC male/female, 75 Ω

Nom. attenuation (dB)	Frequency (GHz)	VSWR max.	Power rating (W)	HUBER+SUHNER type	Item no.
3	1	1.15	1	6903.02.A	22550074
6	1	1.15	1	6906.02.A	22550088
10	1	1.15	0.5	6910.02.A	22550124
20	1	1.2	0.5	6920.02.A	22550138
30	0.7	1.2	0.5	6930.02.A	22550159



Low power attenuators, up to 2 Watts

N male/female, 50 Ω

Nom. attenuation (dB)	Frequency (GHz)	VSWR max.	Power rating (W)	HUBER+SUHNER type	Item no.
1	6	1.25	2	6801_N-50-1	84066765
2	6	1.25	2	6802_N-50-1	84066769
3	6	1.25	2	6803_N-50-1	84066770
4	6	1.25	2	6804_N-50-1	84066772
5	6	1.25	2	6805_N-50-1	84066786
6	6	1.25	2	6806_N-50-1	84066798
7	6	1.25	2	6807_N-50-1	84066801
8	6	1.25	2	6808_N-50-1	84066802
9	6	1.25	2	6809_N-50-1	84066808
10	6	1.25	2	6810_N-50-1	84066809
12	6	1.25	2	6812_N-50-1	84066813
15	6	1.25	2	6815_N-50-1	84066814
20	6	1.25	2	6820_N-50-1	84066815
30	6	1.25	2	6830_N-50-1	84066817
40	6	1.25	2	6840_N-50-1	84060559
10	12.4	1.25	1	6810.17A	22550185
20	12.4	1.25	1	6820.17A	22550186
30	12.4	1.25	1	6830.17A	22550187
1	12.4	1.25	2	6801.17A	22641535
2	12.4	1.25	2	6802.17A	22641536
3	12.4	1.25	2	6803.17A	22550182
4	12.4	1.25	2	6804.17A	22641537
5	12.4	1.25	2	6805.17A	22641538
6	12.4	1.25	2	6806.17A	22550183
7	12.4	1.25	2	6807.17A	22641539
8	12.4	1.25	2	6808.17A	22641540
9	12.4	1.25	2	6809.17A	22641541
10	18	1.25	1	6810.17B	22550190
20	18	1.25	1	6820.17B	22550191
30	18	1.25	1	6830.17B	22550192
3	18	1.25	2	6803.17B	22550188
6	18	1.25	2	6806.17B	22550189



N male/female, 75 Ω

Nom. attenuation (dB)	Frequency (GHz)	VSWR max.	Power rating (W)	HUBER+SUHNER type	Item no.
3	1	1.15	1	6903.18.A	22550218
6	1	1.15	1	6906.18.A	22550219
10	1	1.15	0.8	6910.18.A	22550220
20	1	1.15	0.5	6920.18.A	22550221
30	0.7	1.2	0.5	6930.18.A	22550222



Low power attenuators, up to 2 Watts

PC2.4 male/female, 50 Ω

Nom. attenuation (dB)	Frequency (GHz)	VSWR max.	Power rating (W)	HUBER+SUHNER type	Item no.
3	50	1.75	0.5	6603_PC2.4-50-1	84058353
6	50	1.75	0.5	6606_PC2.4-50-1	84058358
10	50	1.75	0.5	6610_PC2.4-50-1	84058360
20	50	1.75	0.5	6620_PC2.4-50-1	84058363
30	50	1.75	0.5	6630_PC2.4-50-1	84058370



PC7 male/female, 50 Ω

Nom. attenuation (dB)	Frequency (GHz)	VSWR max.	Power rating (W)	HUBER+SUHNER type	Item no.
20	18	1.2	1	6820.28.A	22550025
30	18	1.2	1	6830.28.A	22550027
3	18	1.2	2	6803.28.A	22550198
6	18	1.2	2	6806.28.A	22550199



QMA male/female, 50 Ω

Nom. attenuation (dB)	Frequency (GHz)	VSWR max.	Power rating (W)	HUBER+SUHNER type	Item no.
1	6	1.2	2	6801_QMA-50-2	84058439
2	6	1.2	2	6802_QMA-50-2	84058442
3	6	1.2	2	6803_QMA-50-2	84058454
4	6	1.2	2	6804_QMA-50-2	84058455
5	6	1.2	2	6805_QMA-50-2	84058456
6	6	1.2	2	6806_QMA-50-2	84058457
7	6	1.2	2	6807_QMA-50-2	84058458
8	6	1.2	2	6808_QMA-50-2	84058459
9	6	1.2	2	6809_QMA-50-2	84058460
10	6	1.2	2	6810_QMA-50-2	84058461
12	6	1.2	2	6812_QMA-50-2	84057787
15	6	1.2	2	6815_QMA-50-2	84058463
20	6	1.2	2	6820_QMA-50-2	84058212
1	18	1.4	2	6801_QMA-50-1	84058375
2	18	1.4	2	6802_QMA-50-1	84058382
3	18	1.4	2	6803_QMA-50-1	84040627
4	18	1.4	2	6804_QMA-50-1	84058409
5	18	1.4	2	6805_QMA-50-1	84058420
6	18	1.4	2	6806_QMA-50-1	84040628
7	18	1.4	2	6807_QMA-50-1	84058430
8	18	1.4	2	6808_QMA-50-1	84058433
9	18	1.4	2	6809_QMA-50-1	84058435
10	18	1.4	2	6810_QMA-50-1	84040629
15	18	1.4	2	6815_QMA-50-1	84058436
20	18	1.4	2	6820_QMA-50-1	84058437



Low power attenuators, up to 2 Watts

SK male/female, 50 Ω

Nom. attenuation (dB)	Frequency (GHz)	VSWR max.	Power rating (W)	HUBER+SUHNER type	Item no.
3	40	1.32	0.5	6603.42.0001	84000276
6	40	1.32	0.5	6606.42.0001	84000299
10	40	1.32	0.5	6610.42.0001	84000304
20	40	1.32	0.5	6620.42.0001	84000949



SMA male/female, 50 Ω

Nom. attenuation (dB)	Frequency (GHz)	VSWR max.	Power rating (W)	HUBER+SUHNER type	Item no.
1	6	1.2	2	6601_SMA-50-2	84037361
2	6	1.2	2	6602_SMA-50-2	84034481
3	6	1.2	2	6603_SMA-50-2	84036311
4	6	1.2	2	6604_SMA-50-2	84034272
5	6	1.2	2	6605_SMA-50-2	84037414
6	6	1.2	2	6606_SMA-50-2	84037343
7	6	1.2	2	6607_SMA-50-2	84037410
8	6	1.2	2	6608_SMA-50-2	84037388
9	6	1.2	2	6609_SMA-50-2	84037381
10	6	1.2	2	6610_SMA-50-2	84036452
15	6	1.2	2	6615_SMA-50-2	84037424
18	6	1.2	2	6618_SMA-50-2	84037420
20	6	1.2	2	6620_SMA-50-2	84037362
30	6	1.2	2	6630_SMA-50-2	84037372
4	18	1.35	1	6804.19.A ¹⁾	22641554
5	18	1.35	1	6805.19.A ¹⁾	22641553
6	18	1.35	1	6806.19.A ¹⁾	22550030
7	18	1.35	1	6807.19.A ¹⁾	22641552
8	18	1.35	1	6808.19.A ¹⁾	22641551
9	18	1.35	1	6809.19.A ¹⁾	22641566
10	18	1.35	1	6810.19.A ¹⁾	22550031
20	18	1.35	1	6820.19.A ¹⁾	22550042
30	18	1.35	1	6830.19.A ¹⁾	22550052
1	18	1.35	2	6801.19.A ¹⁾	22641550
2	18	1.35	2	6802.19.A ¹⁾	22641555
3	18	1.35	2	6803.19.A ¹⁾	22550028



1)

¹⁾ Notes: Special body with gold plating and without epoxy captivation for better EMC shielding.

Low power attenuators, up to 2 Watts

SMA male/female, 50 Ω

Nom. attenuation (dB)	Frequency (GHz)	VSWR max.	Power rating (W)	HUBER+SUHNER type	Item no.
1	18	1.35	2	6601_SMA-50-1	84037360
2	18	1.35	2	6602_SMA-50-1	84030799
3	18	1.35	2	6603_SMA-50-1	84036313
4	18	1.35	2	6604_SMA-50-1	84034265
5	18	1.35	2	6605_SMA-50-1	84037413
6	18	1.35	2	6606_SMA-50-1	84037341
7	18	1.35	2	6607_SMA-50-1	84037409
8	18	1.35	2	6608_SMA-50-1	84037387
9	18	1.35	2	6609_SMA-50-1	84037379
10	18	1.35	2	6610_SMA-50-1	84036459
15	18	1.35	2	6615_SMA-50-1	84037421
18	18	1.35	2	6618_SMA-50-1	84037417
20	18	1.35	2	6620_SMA-50-1	84037363
30	18	1.35	2	6630_SMA-50-1	84037371
1	23	1.4	2	6601_SMA-50-3	84066837
2	23	1.4	2	6602_SMA-50-3	84066840
3	23	1.4	2	6603_SMA-50-3	84066841
4	23	1.4	2	6604_SMA-50-3	84066842
5	23	1.4	2	6605_SMA-50-3	84066844
6	23	1.4	2	6606_SMA-50-3	84066845
7	23	1.4	2	6607_SMA-50-3	84066847
8	23	1.4	2	6608_SMA-50-3	84066850
9	23	1.4	2	6609_SMA-50-3	84066851
10	23	1.4	2	6610_SMA-50-3	84066853
12	23	1.4	2	6612_SMA-50-3	84066854
15	23	1.4	2	6615_SMA-50-3	84066855
20	23	1.4	2	6620_SMA-50-3	84066879
30	23	1.4	2	6630_SMA-50-3	84066884



Low power attenuators, up to 2 Watts

SMPX-U male/female, 50 Ω

Nom. attenuation (dB)	Frequency (GHz)	VSWR max.	Power rating (W)	HUBER+SUHNER type	Item no.
1	18	1.35	2	6601_SMPX-U50-1	84067007
2	18	1.35	2	6602_SMPX-U50-1	84067016
3	18	1.35	2	6603_SMPX-U50-1	84067017
4	18	1.35	2	6604_SMPX-U50-1	84067018
5	18	1.35	2	6605_SMPX-U50-1	84067024
6	18	1.35	2	6606_SMPX-U50-1	84067027
7	18	1.35	2	6607_SMPX-U50-1	84067052
8	18	1.35	2	6608_SMPX-U50-1	84067067
9	18	1.35	2	6609_SMPX-U50-1	84067071
10	18	1.35	2	6610_SMPX-U50-1	84067072
11	18	1.35	2	6611_SMPX-U50-1	84067079
12	18	1.35	2	6612_SMPX-U50-1	84067082
13	18	1.35	2	6613_SMPX-U50-1	84067086
20	18	1.35	2	6620_SMPX-U50-1	84067092
30	18	1.35	2	6630_SMPX-U50-1	84067093

Notes: Mates with SMP/GPO interfaces.



TNC male/female, 50 Ω

Nom. attenuation (dB)	Frequency (GHz)	VSWR max.	Power rating (W)	HUBER+SUHNER type	Item no.
5	4	1.2	2	6805.26.AC	23011475
6	4	1.2	2	6806.26.AC	23004296
9	4	1.2	2	6809.26.AC	23011476
10	12.4	1.4	1	6810.26.A	22550195
20	12.4	1.4	1	6820.26.A	22550196
30	12.4	1.4	1	6830.26.A	22550197
3	12.4	1.4	2	6803.26.A	22543746
6	12.4	1.4	2	6806.26.A	22550194



Medium power attenuators, up to 50 Watts

N male/female, 50 Ω

Nom. attenuation (dB)	Frequency (GHz)	VSWR max.	Power rating (W)	HUBER+SUHNER type	Item no.
1	6	1.2	5	5901_N-50-6	84060474
2	6	1.2	5	5902_N-50-6	84060477
3	6	1.2	5	5903_N-50-6	84060582
4	6	1.2	5	5904_N-50-6	84060583
5	6	1.2	5	5905_N-50-6	84060584
6	6	1.2	5	5906_N-50-6	84060587
7	6	1.2	5	5907_N-50-6	84060588
8	6	1.2	5	5908_N-50-6	84060589
9	6	1.2	5	5909_N-50-6	84060590
10	6	1.2	5	5910_N-50-6	84060597
12	6	1.2	5	5912_N-50-6	84060646
15	6	1.2	5	5915_N-50-6	84060647
20	6	1.2	5	5920_N-50-6	84060649
30	6	1.2	5	5930_N-50-6	84060653
40	6	1.2	5	5940_N-50-6	84060654
3	6	1.25	10	5903.17.0003	22648036
6	6	1.35	10	5906.17.0003	22648039
3	6	1.25	25	5903.17.0004	22648037
6	6	1.25	25	5906.17.0004	22648040
10	6	1.2	25	5910_N-50-025	84067096
20	6	1.2	25	5920_N-50-025	84067101
30	6	1.2	25	5930_N-50-025	84067102
3	6	1.25	50	5903.17.0005	22648038
6	6	1.35	50	5906.17.0005	22648041
10	6	1.25	50	5910_N-50-050	84067128
20	6	1.25	50	5920_N-50-050	84067127
30	6	1.25	50	5930_N-50-050	84064545
3	18	1.4	10	5903_N-50-010	84060166
6	18	1.4	10	5906_N-50-010	84060181
10	18	1.4	10	5910_N-50-010	84060182
20	18	1.4	10	5920_N-50-010	84060186
30	18	1.4	10	5930_N-50-010	84060452
40	18	1.4	10	5940_N-50-010	84050453



Medium power attenuators, up to 50 Watts

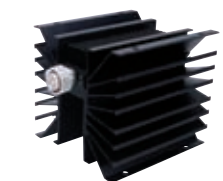
SMA male/female, 50 Ω

Nom. attenuation (dB)	Frequency (GHz)	VSWR max.	Power rating (W)	HUBER+SUHNER type	Item no.
3	6	1.2	10	5903.19.0001	22659280
6	6	1.2	10	5906.19.0002	22651220
3	6	1.25	25	5903.19.0002	22659518
6	6	1.35	25	5906.19.0003	22659520
10	6	1.2	25	5910_SMA-50-025	84066923
20	6	1.2	25	5920_SMA-50-025	84066927
30	6	1.2	25	5930_SMA-50-025	84066931
6	6	1.35	50	5906.19.0004	22659521
3	6	1.25	50	5903.19.0003	22659519
10	6	1.25	50	5910_SMA-50-050	84066933
20	6	1.25	50	5920_SMA-50-050	84066935
30	6	1.25	50	5930_SMA-50-050	84066936
3	18	1.35	5	5903_SMA-50-005	84066683
6	18	1.35	5	5906_SMA-50-005	84066745
10	18	1.35	5	5910_SMA-50-005	84066751
20	18	1.35	5	5920_SMA-50-005	84066757
30	18	1.35	5	5930_SMA-50-005	84066762
40	18	1.35	5	5940_SMA-50-005	84066764
3	18	1.35	10	5903_SMA-50-010	84066939
6	18	1.35	10	5906_SMA-50-010	84066946
10	18	1.35	10	5910_SMA-50-010	84066948
20	18	1.35	10	5920_SMA-50-010	84066949
30	18	1.35	10	5930_SMA-50-010	84066962
40	18	1.4	10	5940_SMA-50-010	84066987



7/16 male/female, 50 Ω

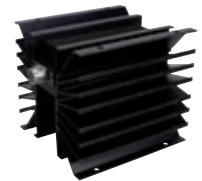
Nom. attenuation (dB)	Frequency (GHz)	VSWR max.	Power rating (W)	HUBER+SUHNER type	Item no.
3	6	1.25	10	5903.41.0001	22652689
6	6	1.35	10	5906.41.0001	22652690
10	6	1.45	10	5910_716-50-010	84067139
20	6	1.45	10	5920_716-50-010	84067141
30	6	1.45	10	5930_716-50-010	84067142
3	6	1.25	25	5903.41.0002	22651234
6	6	1.35	25	5906.41.0002	22651235
10	6	1.2	25	5910_716-50-025	84067156
20	6	1.2	25	5920_716-50-025	84067171
30	6	1.2	25	5930_716-50-025	84067172
3	6	1.25	50	5903.41.0003	22651243
6	6	1.35	50	5906.41.0003	22650373
10	6	1.45	50	5910_716-50-050	84067275
20	6	1.45	50	5920_716-50-050	84067278
30	6	1.45	50	5930_716-50-050	84067279



High power attenuators, up to 300 Watts

N male/female, 50 Ω

Nom. attenuation (dB)	Frequency (GHz)	VSWR max.	Power rating (W)	HUBER+SUHNER type	Item no.
3	4	1.35	200	5903_N-50-200	84067251
6	4	1.35	200	5906_N-50-200	84067260
10	4	1.35	200	5910_N-50-200	84067268
20	4	1.35	200	5920_N-50-200	84067269
30	4	1.5	200	5930_N-50-200	84067272
3	4	1.35	300	5903_N-50-300	84065030
6	4	1.35	300	5906_N-50-300	84065095
10	4	1.35	300	5910_N-50-300	84065098
20	4	1.35	300	5920_N-50-300	84065099
30	4	1.5	300	5930_N-50-300	84065102
40	4	1.5	300	5940_N-50-300	84065104
3	6	1.45	100	5903_N-50-1	84060038
6	6	1.45	100	5906_N-50-1	84060058
10	6	1.45	100	5910_N-50-1	84060059
20	6	1.45	100	5920_N-50-1	84060060
30	6	1.45	100	5930_N-50-1	84048317
40	6	1.45	100	5940_N-50-1	84060078
3	6	1.3	250	5903_N-50-250	84065155
6	6	1.3	250	5906_N-50-250	84065181
10	6	1.3	250	5910_N-50-250	84065183
20	6	1.3	250	5920_N-50-250	84065184
30	6	1.3	250	5930_N-50-250	84065185
40	6	1.3	250	5940_N-50-250	84065182



SMA male/female, 50 Ω

Nom. attenuation (dB)	Frequency (GHz)	VSWR max.	Power rating (W)	HUBER+SUHNER type	Item no.
3	6	1.45	100	5903_SMA-50-1	84066892
6	6	1.45	100	5906_SMA-50-1	84066893
10	6	1.45	100	5910_SMA-50-1	84066902
20	6	1.45	100	5920_SMA-50-1	84066903
30	6	1.45	100	5930_SMA-50-1	84066904



High power, up to 300 Watts

7/16 male/female, 50 Ω

Nom. attenuation (dB)	Frequency (GHz)	VSWR max.	Power rating (W)	HUBER+SUHNER type	Item no.
3	2.5	1.35	100	5903_716-50-1	84060159
6	2.5	1.35	100	5906_716-50-1	84060655
10	2.5	1.35	100	5910_716-50-1	84060657
20	2.5	1.35	100	5920_716-50-1	84060658
30	2.5	1.35	100	5930_716-50-1	84060692
40	2.5	1.35	100	5940_716-50-1	84060693
3	4	1.35	200	5903_716-50-200	84067178
6	4	1.35	200	5906_716-50-200	84067179
10	4	1.35	200	5910_716-50-200	84067181
20	4	1.35	200	5920_716-50-200	84067190
30	4	1.35	200	5930_716-50-200	84067192

